

Vehicle Condition Report

Vehicle VIN: JTHBA1D29G5037129



Vehicle Information

Year : 2016 Mileage : 9577
 Brand : Lexus Exterior Color : Black
 Model : IS 200t Trim Color : Black
 Series : F Sport Trim Type : Leather
 Body Type : Sedan
 Drive Type : Rear Wheel Drive
 Engine : 2.0L, 4 Cylinder Engine, Gasoline Fuel
 Transmission : 8-Speed Automatic Transmission

Inspection Details

Inspection Date : 29 Sep 2017 2:10 PM
 Inspection ID : 53294
 Inspector : 5204

Grade : B

Inspection Notes : Interior Inspection: All power functions work properly. Leather seats and carpet kept in good condition. Small scuffs on cargo interior trim panel. Exterior Inspection: Vehicle exterior well kept. Minor chips to front bumper cover with curb rash on the underside. Right front wheel has a 1" scratch. Rear bumper cover has a 4" scratch and the bumper is dented about 6". Emblems on right fender and decklid seem to be a little worn with the white peeling. Test Drive: No unusual noise, rattles or knocking while driving or braking. Transmission went in and out of gear fine.

Vehicle Accessories

Audio/Video

- AM/FM Stereo
- Auxiliary Audio Input
- CD Player

Convenience Exterior

- Heated Mirrors

Convenience Interior

- Adjustable Steering Wheel
- Blind Spot Monitor
- Climate Control
- Floor Mats
- Keyless Start
- Leather Steering Wheel

Equipment

- A/C
- Cruise Control
- Trip Computer

Glass/Wipers/Lamps

- Daytime Running Lights
- Intermittent Wipers

Mechanical

- Engine Immobilizer
- Turbocharged

Pwr Grp

- Power Door Locks
- Power Steering
- Power Windows

Safety

- Brake Assist
- Driver Air Bag
- Passenger Air Bag
- Rear Head Air Bag
- Rear Parking Aid
- Tire Pressure Monitor
- Traction Control

Seating

- Bucket Seats
- Leather Seats
- Pass-Through Rear Seat
- Power Driver Seat
- Power Passenger Seat
- Rear Bench Seat

Wheels

- ABS
- Aluminum Wheels
- Tires - Front Performance
- Tires - Rear Performance

Added Value

- Child Safety Locks
- Heated And Cooled Front Seats
- Integrated Turn Signal Mirrors
- MP3 Player
- Satellite Radio

Tire Information

	Manufacturer	Size	Depth		Manufacturer	Size	Depth
Left Front :	Bridgestone	225/40-18	8/32	Right Front :	Bridgestone	225/40-18	8/32
Left Rear :	Bridgestone	225/40-18	8/32	Right Rear :	Bridgestone	225/40-18	7/32
Spare :	Bridgestone	125/70-17	5/32	*Tire Depth of 5/32 or greater is considered normal			

Vehicle Condition

Wear and Tear

Area	Type	Size
1 Front Bumper Cover	Chipped	Minor

Vehicle Condition Report

Vehicle VIN: JTHBA1D29G5037129

2	Front Bumper Cover lower curb rash	Scratched	Minor
3	Rear Bumper Cover	Scratched	Bet 3" - 6"
4	Rear Bumper Cover	Dented	Bet 6" - 12"
5	Other / See Notation right fender/rear emblem worn minor	Other / See Notation	Minor
6	Other / See Notation rear cargo trim	Scuffed	Minor
7	Right Front Wheel	Scratched	Minor

Vehicle Inspection Points

Legend: ● Item inspected and is ok ● Item inspected and contains an issue ○ Item is not present or could not be inspected

Engine Compartment

Emission Sticker	●	Check Engine Compartment for Fluid Leaks	●
Hood Struts Operation	●	Battery Is Secure	●
Underhood Insulation	●	Battery Condition	●
Hood Latch Operation	●	Check Transmission For Leaks	●

Engine Compartment-Parts and Fluid Levels

Windshield Washer Fluid Level	●	Check Power Steering Fluid Level	●
Inspect Hoses	●	Inspect Coolant Levels	●
Check For Engine Oil Sludge	●	Inspector Radiator Hose	●
Check Oil Level	●	Check Transmission Fluid	●
Inspect Belts	●	Check Master Cylinder For Brake Fluid	●

Exterior-Body Panels

Doors operate properly	●	Inspect Body Panels For Damage	●
Tailgate Operation	●	Inspect Roof for Damage	●
Inspect Undercarriage For Damage	●	Frame / Unibody	●
Inspect Truck Bed Condition	○	Check For Rust/ Corrosion	●
Inspect Paint Condition	●	Emblem/ Badge	●

Notes: See Vehicle Condition Section

Inspect Windshield and Other Glass for Damage	●	Inspect Quarter Panels for Damage	●
Inspect Fenders for Damage	●	Door And Side Moldings	●
Trunk Lid Closes Flush With Quarter Panel	●	Inspect Bumpers and Molding For Damage	●

Notes: See Vehicle Condition Section

Exterior-Electronic

Side Markers	●	Side Marker Lights	●
Headlights - Low/ High Beam	●	Tail Lights	●
License Plate Lights And Brackets	●	Reverse Lights	●
Fog Lights	●	Brake Lights	●
High Center Third Brake Light	●		

Exterior-Hardware

Vehicle Identification Number On Door Jam	●	Vehicle Identification Number On Dashboard	●
Trunk Latch Functions	●	Convertible Top Operational	○
Front Wiper Blades	●	Side Mirrors	●
Remote Gas Cover Latch Operation	●	Gas Cap Condition	●
Door Handles Operational	●	Door Locks And Child Latches Function	●
Rear Window Windshield Wiper Arm	○	Antenna Mast Up/ Down	●

Rear Wiper Blades If Applicable	●	Side Mirror Extends	○
Chrome Parts	●	Roof Rack	○
Interior-Convenience and Power Controls			
Remote Key Fob Functions	●	Power Seats	●
Alarm	●	Power Sunroof	●
Rear Window Sunshade	○	Power Windows	●
Window Operation	●	Power Mirrors	●
Manual Door Locks	○	Manual Windows	○
Power Door Locks	●	Window Switches	●
Interior-Heating and A/C			
Air Conditioner Blows Cold Air	●	Cooled Seat Operation	●
Heated Seat Operation	●	Heater Blows Warm Air	●
Rear Defogger Grid Lines	●	Vent Blower Speed	●
Fresh Air Mode	●	Recirculating Air Mode	●
Automatic Climate Control	●		
Interior-Instruments / Controls			
Parking Brake	●	Cupholder Extends	●
Clock Functions	●	Cigarette Ligher Operational	●
ABS Warning Light	●	Rear View Mirror/ Compass Function	●
Battery Gauge / Warning Light	●	Odometer Operation	●
Dome Light	●	Airbag Warning Light	●
Trunk Release	●	Dashboard Illumination	●
Knobs, Buttons and Other Controls	●	Sunvisor Vanity Mirrors	●
Hood Release	●	Windshield Wiper Controls	●
Check Engine Light	●	Horn Functions	●
Gearshift Operation	●	Rear Window Wiper Controls	●
Emergency Road Hazard Lights	●	Defogger Indicator Light	●
Warning Lights, Other	●	Dashboard Condition	●
Tilt Steering Column Functions	●	Sunvisor Lights Function	●
Interior-Radio / Entertainment			
Rear Back-up Camera	●	Navigation System Operation	○
CD/DVD	●	Rear Entertainment System and Controls	○
Speakers	●	Check Radio Controls	●
Interior-Seating and Other Interior			
Carpet - Rear	●	Cargo Area Carpet	●
Airbag - Passenger	●	Airbag - Driver	●

Vehicle Condition Report

Vehicle VIN: JTHBA1D29G5037129

Headrests Function Properly	●	Armrest Condition	●
Tailgate Closing Assist	○	Interior Trim	●
Door Sill Plates	●	Notes: See Vehicle Condition Section	
Seatbelts - Rear	●	Windscreen Functionality, Convertible Top	○
Liftgate Struts	●	Toolkit Complete	●
First Aid Kit If Applicable	●	Glove Box	●
Trunk Light Operational	●	Weather Stripping Condition	●
Seating Surfaces - Rear	●	Spare Tire	●
Seatbelts - Front	●	Seating Surfaces - Front	●
Tire Jack and Tools	●	Owner's Manual	●
Headliner Condition	●	Smoker Residue Or Odors	●
Seat Position Adjusters	●	Carpet - Front	●
Paint			
Was a paint mil thickness gauge used to measure paint thickness? (NM) ○			
Test Drive			
Cruise Control Operates	●	Steering Wheel Is Centered	●
Steering Wheel Operation	●	Cold/ Hot Starting	●
Engine Idling Normal	●	Engine Operating Temperature	●
Gears Range Operate Smoothly	●	Inspect For Brake Pulsation	●
Inspect For Excessive Smoke	●	Transmission/ Clutch Operation	●
Idle Smoothness	●	Speedometer Functions	●
Acceleration	●	Check For Squeaks	●
Check For Rattles	●	Check For Vibration	●
Excessive Wind Noise	●	Engine Noise	●
Suspension and Handling	●	Vehicle Tracks Straight	●
Starter Functionality	●	Check For Brake Noise	●
Inspect Backup Lights	●	Check For Unusual Tire Noise	●
Tires and Wheels			
Tire Condition and Tread Depth	●	Wheel Condition	●
Notes: See Vehicle Condition Section			

Date : _____

Seller Signature : _____

v 4.5



Vehicle Condition Report

Vehicle VIN: JTHBA1D29G5037129

VEHICLE PURCHASE DISCLAIMER: The information contained within this vehicle condition report and all attachments to it ("Report") is accurate to the best of the inspector's knowledge and observations, but cannot be guaranteed as its scope and accuracy are limited to a variety of factors including, but not limited to, to the type of inspection ordered (for example, whether or not the order includes the placement of the vehicle on a lift for the inspection), general accessibility to the item inspected with only minimal disassembly and without a computerized measuring system, and environmental factors such as weather. In short, the vehicle inspection is intended solely as a limited assessment of said vehicle's condition at the time and date of examination, and pertains only to the items visually inspected and identified in the Report at the time of the inspection. As such, there are no implied or express warranties or guarantees of any kind in connection with this vehicle inspection or Report as, in general, there is an inherent risk of unknown prior damage and repair with any used vehicle and used vehicles may have unknown damage or repair not found on inspection. AiM specifically disclaims any liability for any loss or damage arising in connection with the purchase, ownership or operation of said vehicle AND further disclaims any liability of any hidden wreck, damage, defect, or tampered components not readily apparent or not found during this inspection, as well as other conditions that may exist which did not occur or appear during inspection. Bottom-line: This Report is for information only and is not to be considered a recommendation for or against the purchase of the inspected vehicle.

IN ANY EVENT, UNLESS OTHERWISE STATED IN A SEPARATE WRITTEN AND SIGNED CONTRACT, AiM's MAXIMUM LIABILITY TO ANY CUSTOMER OR THIRD-PARTY WHO RELIES ON REPRESENTATIONS MADE WITHIN THE CONDITION REPORT IS LIMITED TO THE PURCHASE PRICE PAID FOR THE CONDITION REPORT AND UNDERLYING VEHICLE INSPECTION, PLUS INTEREST AS ALLOWED BY LAW. IN NO WAY SHALL AiM BE LIABLE FOR PROPERTY DAMAGE, PERSONAL INJURY, LOSS OF USE, INTERRUPTION OF BUSINESS, LOST PROFITS, LOST DATA OR OTHER CONSEQUENTIAL, PUNITIVE OR SPECIAL DAMAGES FOR INACCURACIES OR MISREPRESENTATIONS CONTAINED WITH THE CONDITION REPORT.

Vehicle Condition Report

Vehicle VIN: JTHBA1D29G5037129

Vehicle Pictures

Picture Description : **Interior**



Picture Description : **Engine**



Picture Description : **Tire**



Picture Description : **Front Corner**



Picture Description : **Odometer**



Picture Description : **Rear**



Vehicle Condition Report

Vehicle VIN: JTHBA1D29G5037129

Picture Description : **Rear Corner**



Picture Description : **Interior**



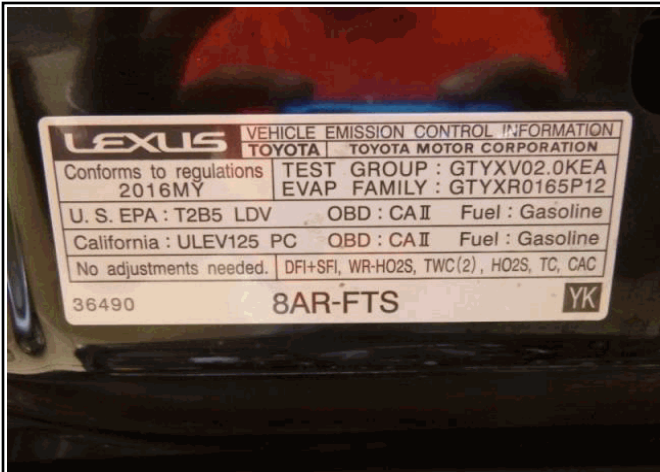
Picture Description : **Interior**



Picture Description : **Tire**



Picture Description : **Engine**



Picture Description : **Roof**



Vehicle Condition Report

Vehicle VIN: JTHBA1D29G5037129

Picture Description : **Tire**



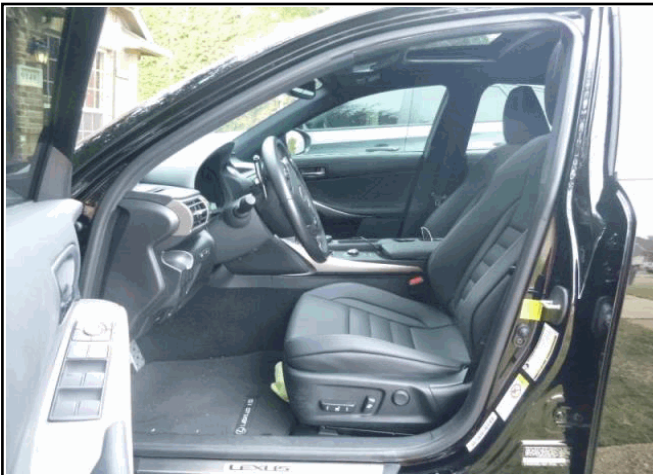
Picture Description : **Right Side**



Picture Description : **Tire**



Picture Description : **Interior**



Picture Description : **Front**



Picture Description : **Tire**



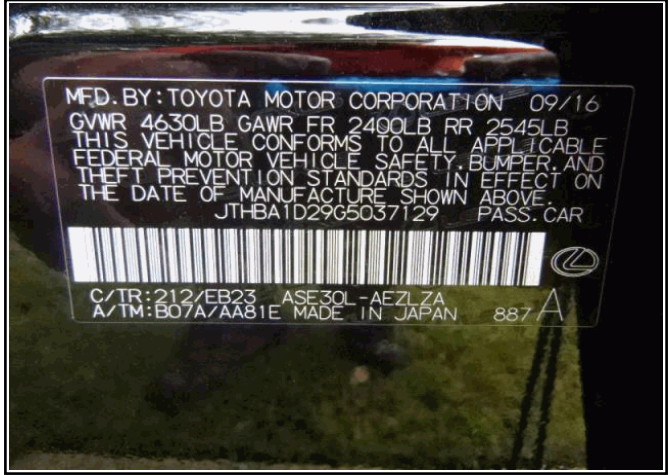
Vehicle Condition Report

Vehicle VIN: JTHBA1D29G5037129

Picture Description : **Front**



Picture Description : **Vin**



Picture Description : **Left Side**



Picture Description : **Key/CD/Manual**



Picture Description : **Interior**



Picture Description : **Int Cargo**



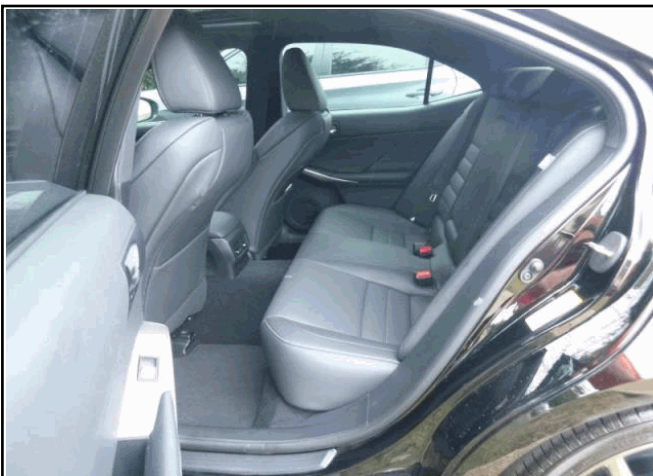
Vehicle Condition Report

Vehicle VIN: JTHBA1D29G5037129

Picture Description : **Left Side**



Picture Description : **Interior**



Picture Description : **Right Side**



Picture Description : **Interior**



Damage Pictures

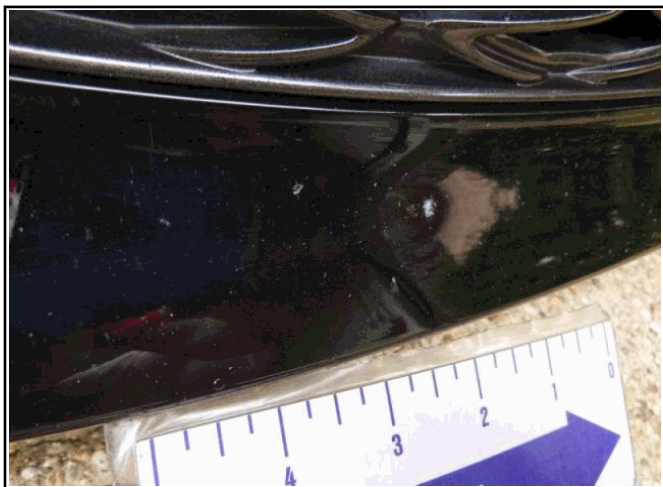
Picture Description : **Bumper Cover Dented Bet 6" - 12"**



Picture Description : **Bumper Cover Chipped Minor**



Picture Description : **Bumper Cover Chipped Minor**



Picture Description : **Other / See Notation Other / See Notation Minor**



Picture Description : **Other / See Notation Scuffed Minor**



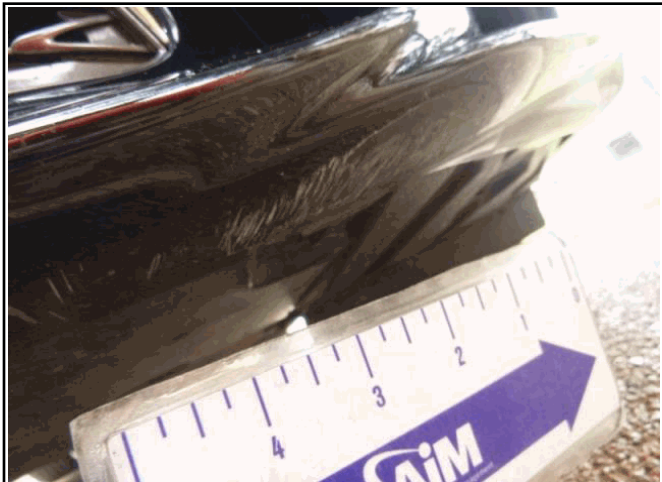
Picture Description : **Other / See Notation Scuffed Minor**



Vehicle Condition Report

Vehicle VIN: JTHBA1D29G5037129

Picture Description : **Bumper Cover Scratched Minor**



Picture Description : **Bumper Cover Scratched Minor**



Picture Description : **Bumper Cover Scratched Bet 3" - 6"**



Picture Description : **Bumper Cover Dented Bet 6" - 12"**



Picture Description : **Other / See Notation Other / See Notation Minor**



Picture Description : **Other / See Notation Scuffed Minor**



Vehicle Condition Report

Vehicle VIN: JTHBA1D29G5037129

Picture Description : **Wheel Scratched Minor**



Picture Description : **Bumper Cover Scratched Bet 3" - 6"**



Picture Description : **Other / See Notation Other / See Notation Minor**



Picture Description : **Wheel Scratched Minor**



Picture Description : **Bumper Cover Scratched Minor**



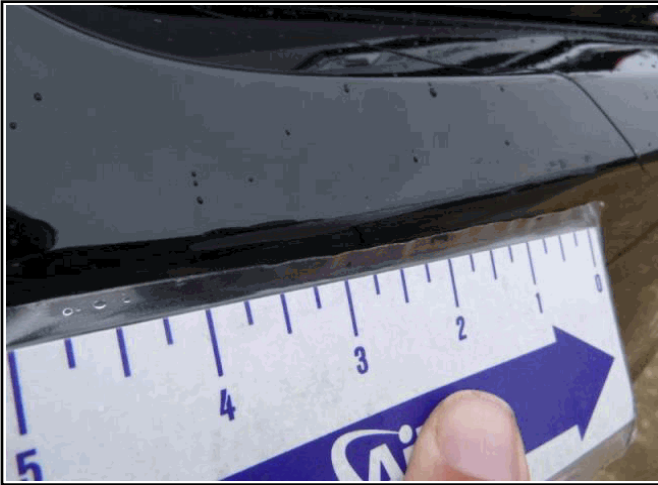
Picture Description : **Other / See Notation Other / See Notation Minor**



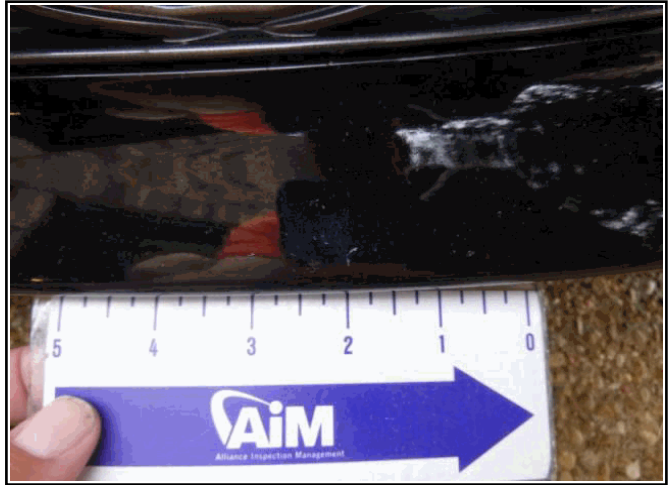
Vehicle Condition Report

Vehicle VIN: JTHBA1D29G5037129

Picture Description : **Bumper Cover Scratched Bet 3" - 6"**



Picture Description : **Bumper Cover Chipped Minor**



Picture Description : **Bumper Cover Chipped Minor**



Picture Description : **Other / See Notation Scuffed Minor**

